



Cumberland Park, W3

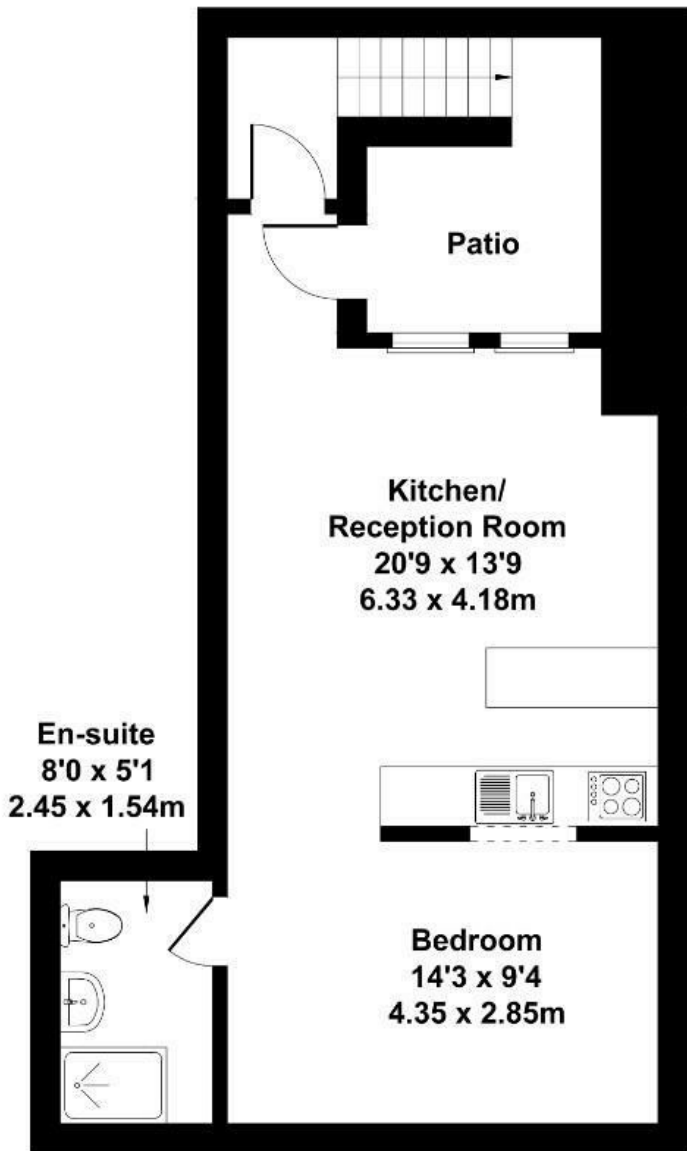
LONG LET: Located on the lower ground floor of a contemporary new build in Cumberland Park, this stylish studio flat offers well-planned living space with a private patio.

- Open-plan studio layout
- Integrated modern kitchen
- Stylish shower room
- Private patio space
- Near Acton Central & Elizabeth Line
- Close to shops, cafes & parks

£2,000 Per Month

Cumberland Park

Approximate Gross Internal Area
4.63 sq ft - 43 sq m
(Excluding Patio)



LOWER GROUND FLOOR

Not to Scale. Produced by The Plan Portal 2025
For Illustrative Purposes Only.

Energy Efficiency Rating		
	Current	Potential
Very energy efficient - lower running costs		
(92 plus) A		
(81-91) B		
(69-80) C		
(55-68) D		
(39-54) E		
(21-38) F		
(1-20) G		
Not energy efficient - higher running costs		
England & Wales	EU Directive 2002/91/EC	